

DEDON

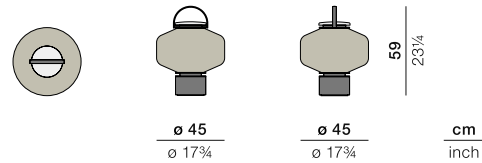
THE OTHERS

THE OTHERS

Lantern S

Design by **Stephen Burks** | Item code: **093010 (230V) / 093015 (120V)** | Weight **10,1 kg/23 lbs** | Volume **0,11 m³/5 cu ft**

Measurements



Collection: Meet THE OTHERS, an anthropomorphic lantern collection that ventures into decorative art. Playful, colorful, sculptural and sophisticated, THE OTHERS consists of a variety of hand-woven lanterns that, presented individually or arranged in totem-like stacks, take on the appearance of illuminated characters. Pairs of hand-made acrylic eyes, available as accessories, gaze back at the viewer with humor, curiosity and even a little mischief.

Lantern S: Available in cloud or forest, this small woven lantern features an Italian marble base, a handle for carrying, and an innovative LED outdoor lighting system, rechargeable by solar panels or cable.

Frame: The frame consist of aluminum. The base consist of marble nero marquina.

Finishing: The frame is electrostatic powder-coated. The marble surface has been treated to prevent moisture absorption.

Options: Optional set of eyes. Handmade acrylic mosaic. Clean with a soft cloth and warm water.

Frame maintenance: Clean with a soft cloth and warm water.

Fiber Standard



128
cloud

127
forest

Optional Eyes



093092001

093092002



093092003

Energy efficiency

Energy efficiency eec A+. These luminaires contain built-in LED lamps. The lamps cannot be changed in the luminaires.

Certificates

CE, FCC, PSE, SAA, ETL

IP64

This lighting object is a decorative element for outdoor and indoor use and features a warm white correlated color temperature (2700 Kelvin). It has an ingress protection marking for LED Module by IP64, which means it is dustproof, splash proof and therefore fully suitable for outdoor use.

To learn more about DEDON, our collections and warranty policy, please visit our website –

www.dedon.de

10/20

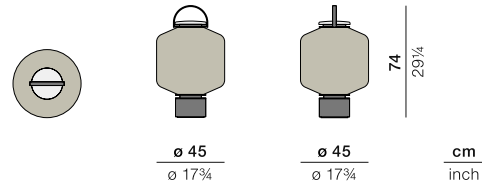
DEDON

THE OTHERS

Lantern M

Design by **Stephen Burks** | Item code: **093020 (230V) / 093025 (120V)** | Weight **10,6 kg/24 lbs** | Volume **0,14 m³/6 cu ft**

Measurements



Collection: Meet THE OTHERS, an anthropomorphic lantern collection that ventures into decorative art. Playful, colorful, sculptural and sophisticated, THE OTHERS consists of a variety of hand-woven lanterns that, presented individually or arranged in totem-like stacks, take on the appearance of illuminated characters. Pairs of hand-made acrylic eyes, available as accessories, gaze back at the viewer with humor, curiosity and even a little mischief.

Lantern M: Available in cloud or terra, this medium woven lantern features an Italian marble base, a handle for carrying, and an innovative LED outdoor lighting system, rechargeable by solar panels or cable.

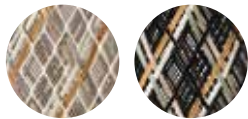
Frame: The frame consists of aluminum. The base consists of marble.

Finishing: The frame is electrostatic powder-coated. The marble surface has been treated to prevent moisture absorption.

Options: Optional set of eyes. Handmade acrylic mosaic. Clean with a soft cloth and warm water.

Frame maintenance: Clean with a soft cloth and warm water.

Fiber Standard



128
cloud

129
terra

Optional Eyes



093092001

093092002



093092003

Energy efficiency

Energy efficiency eec A+. These luminaires contain built-in LED lamps. The lamps cannot be changed in the luminaires.

Certificates

CE, FCC, PSE, SAA, ETL

IP64

This lighting object is a decorative element for outdoor and indoor use and features a warm white correlated color temperature (2700 Kelvin). It has an ingress protection marking for LED Module by IP64, which means it is dustproof, splash proof and therefore fully suitable for outdoor use.

To learn more about DEDON, our collections and warranty policy, please visit our website –

www.dedon.de

10/20

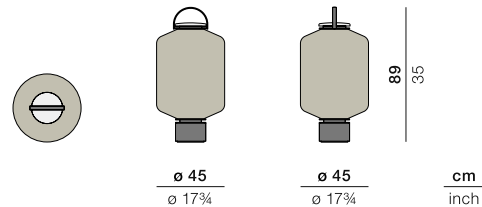
DEDON

THE OTHERS

Lantern L

Design by **Stephen Burks** | Item code: **093030 (230V) / 093035 (120V)** | Weight **11,2 kg/25 lbs** | Volume **0,17 m³/7 cu ft**

Measurements



Collection: Meet THE OTHERS, an anthropomorphic lantern collection that ventures into decorative art. Playful, colorful, sculptural and sophisticated, THE OTHERS consists of a variety of hand-woven lanterns that, presented individually or arranged in totem-like stacks, take on the appearance of illuminated characters. Pairs of hand-made acrylic eyes, available as accessories, gaze back at the viewer with humor, curiosity and even a little mischief.

Lantern L: Available in cloud or rock, this large woven lantern features an Italian marble base, a handle for carrying, and an innovative LED outdoor lighting system, rechargeable by solar panels or cable.

Frame: The frame consists of aluminum. The base consists of marble.

Finishing: The frame is electrostatic powder-coated. The marble surface has been treated to prevent moisture absorption.

Options: Optional set of eyes. Handmade acrylic mosaic. Clean with a soft cloth and warm water.

Frame maintenance: Clean with a soft cloth and warm water.

Fiber Standard



128
cloud

130
rock

Optional Eyes



Energy efficiency

Energy efficiency eec A+. These luminaires contain built-in LED lamps. The lamps cannot be changed in the luminaires.

Certificates

CE, FCC, PSE, SAA, ETL

IP64

This lighting object is a decorative element for outdoor and indoor use and features a warm white correlated color temperature (2700 Kelvin). It has an ingress protection marking for LED Module by IP64, which means it is dustproof, splash proof and therefore fully suitable for outdoor use.

To learn more about DEDON, our collections and warranty policy, please visit our website –

www.dedon.de

10/20

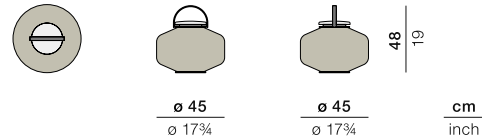
DEDON

THE OTHERS

Lantern hanging S

Design by **Stephen Burks** | Item code: **093040 (230V) / 093045 (120V)** | Weight **3 kg/7 lbs** | Volume **0,09 m³/4 cu ft**

Measurements



Collection: Meet THE OTHERS, an anthropomorphic lantern collection that ventures into decorative art. Playful, colorful, sculptural and sophisticated, THE OTHERS consists of a variety of hand-woven lanterns that, presented individually or arranged in totem-like stacks, take on the appearance of illuminated characters. Pairs of hand-made acrylic eyes, available as accessories, gaze back at the viewer with humor, curiosity and even a little mischief.

Lantern hanging S: Available in cloud or forest, this small woven lantern features a handle for carrying or hanging, and an innovative LED outdoor lighting system, rechargeable by solar panels or cable.

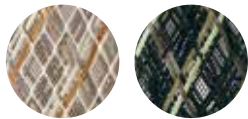
Frame: The frame consist of aluminum. The frame consist of aluminum. The spacer consists of premium teak.

Finishing: The frame is electrostatic powder-coated. The spacer consists of natural finished teak.

Options: Optional set of eyes. Handmade acrylic mosaic: Clean with a soft cloth and warm water.

Frame maintenance: Clean with a soft cloth and warm water.

Fiber Standard



128
cloud

127
forest

Optional Eyes



093092001

093092002



093092003

Energy efficiency

Energy efficiency eec A+. These luminaires contain built-in LED lamps. The lamps cannot be changed in the luminaires.

Certificates

CE, FCC, PSE, SAA, ETL

IP64

This lighting object is a decorative element for outdoor and indoor use and features a warm white correlated color temperature (2700 Kelvin). It has an ingress protection marking for LED Module by IP64, which means it is dustproof, splash proof and therefore fully suitable for outdoor use.

To learn more about DEDON, our collections and warranty policy, please visit our website –

www.dedon.de

10/20

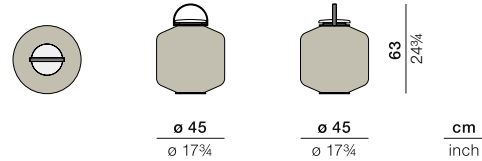
DEDON

THE OTHERS

Lantern hanging M

Design by **Stephen Burks** | Item code: **093050 (230V) / 093055 (120V)** | Weight **3,6 kg/8 lbs** | Volume **0,12 m³/5 cu ft**

Measurements



Collection: Meet THE OTHERS, an anthropomorphic lantern collection that ventures into decorative art. Playful, colorful, sculptural and sophisticated, THE OTHERS consists of a variety of hand-woven lanterns that, presented individually or arranged in totem-like stacks, take on the appearance of illuminated characters. Pairs of hand-made acrylic eyes, available as accessories, gaze back at the viewer with humor, curiosity and even a little mischief.

Lantern hanging M: Available in cloud or terra, this medium woven lantern features a handle for carrying or hanging, and an innovative LED outdoor lighting system, rechargeable by solar panels or cable.

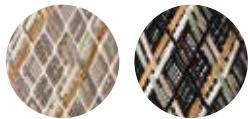
Frame: The frame consist of aluminum. The frame consist of aluminum. The spacer consists of premium teak.

Finishing: The frame is electrostatic powder-coated. The spacer consists of natural finished teak.

Options: Optional set of eyes. Handmade acrylic mosaic: Clean with a soft cloth and warm water.

Frame maintenance: Clean with a soft cloth and warm water.

Fiber Standard



128
cloud

129
terra

Optional Eyes



093092001

093092002



093092003

Energy efficiency

Energy efficiency eec A+. These luminaires contain built-in LED lamps. The lamps cannot be changed in the luminaires.

Certificates

CE, FCC, PSE, SAA, ETL

IP64

This lighting object is a decorative element for outdoor and indoor use and features a warm white correlated color temperature (2700 Kelvin). It has an ingress protection marking for LED Module by IP64, which means it is dustproof, splash proof and therefore fully suitable for outdoor use.

To learn more about DEDON, our collections and warranty policy, please visit our website –

www.dedon.de

10/20

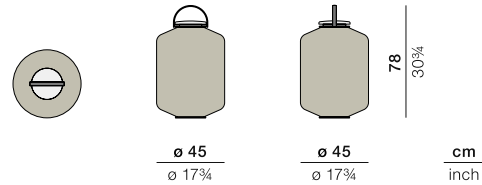
DEDON

THE OTHERS

Lantern hanging L

Design by **Stephen Burks** | Item code: **093060 (230V) / 093065 (120V)** | Weight **4,2 kg/10 lbs** | Volume **0,15 m³/6 cu ft**

Measurements



Collection: Meet THE OTHERS, an anthropomorphic lantern collection that ventures into decorative art. Playful, colorful, sculptural and sophisticated, THE OTHERS consists of a variety of hand-woven lanterns that, presented individually or arranged in totem-like stacks, take on the appearance of illuminated characters. Pairs of hand-made acrylic eyes, available as accessories, gaze back at the viewer with humor, curiosity and even a little mischief.

Lantern hanging L: Available in cloud or rock, this large woven lantern features a handle for carrying or hanging, and an innovative LED outdoor lighting system, rechargeable by solar panels or cable.

Frame: The frame consist of aluminum. The spacer consists of premium teak.

Finishing: The frame is electrostatic powder-coated. The spacer consists of natural finished teak.

Options: Optional set of eyes. Handmade acrylic mosaic: Clean with a soft cloth and warm water.

Frame maintenance: Clean with a soft cloth and warm water.

Fiber Standard



128
cloud

130
rock

Optional Eyes



093092001

093092002



093092003

Energy efficiency

Energy efficiency eec A+. These luminaires contain built-in LED lamps. The lamps cannot be changed in the luminaires.

Certificates

CE, FCC, PSE, SAA, ETL

IP64

This lighting object is a decorative element for outdoor and indoor use and features a warm white correlated color temperature (2700 Kelvin). It has an ingress protection marking for LED Module by IP64, which means it is dustproof, splash proof and therefore fully suitable for outdoor use.

To learn more about DEDON, our collections and warranty policy, please visit our website –

www.dedon.de

10/20

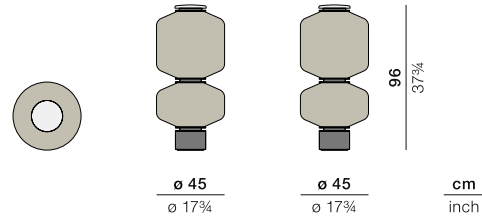
DEDON

THE OTHERS

Statue BUKA

Design by **Stephen Burks** | Item code: **093130000 (230V) / 093135000 (120V)** | Weight **12,9 kg/29 lbs** | Volume **0,19 m³/7 cu ft**

Measurements



Collection: Meet THE OTHERS, an anthropomorphic lantern collection that ventures into decorative art. Playful, colorful, sculptural and sophisticated, THE OTHERS consists of a variety of hand-woven lanterns that, presented individually or arranged in totem-like stacks, take on the appearance of illuminated characters. Pairs of hand-made acrylic eyes, available as accessories, gaze back at the viewer with humor, curiosity and even a little mischief.

Statue BUKA: Composed of two woven lantern shades in cloud, this small, lightweight sculpture features an Italian marble base and an innovative LED outdoor lighting system, rechargeable by solar panels or cable. Custom compositions are available by special order.

Frame: The frame consist of aluminum. The base consist of marble nero marquina.

Finishing: The frame is electrostatic powder-coated. The marble surface has been treated to prevent moisture absorption.

Options: Optional set of eyes. Handmade acrylic mosaic. Clean with a soft cloth and warm water.

Frame maintenance: Clean with a soft cloth and warm water.

Fiber



128
cloud

Optional Eyes



093092001



093092002



093092003

Energy efficiency

Energy efficiency eec A+. These luminaires contain built-in LED lamps. The lamps cannot be changed in the luminaires.

Certificates

CE, FCC, PSE, SAA, ETL

IP64

This lighting object is a decorative element for outdoor and indoor use and features a warm white correlated color temperature (2700 Kelvin). It has an ingress protection marking for LED Module by IP64, which means it is dustproof, splash proof and therefore fully suitable for outdoor use.

To learn more about DEDON, our collections and warranty policy, please visit our website –

www.dedon.de

10/20

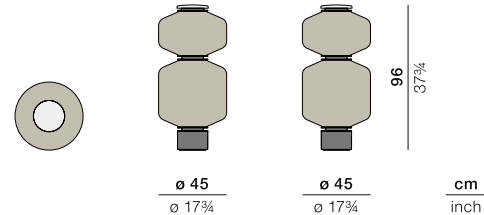
DEDON

THE OTHERS

Statue TEBU

Design by **Stephen Burks** | Item code: **093100000 (230V) / 093105000 (120V)** | Weight **12,9 kg/29 lbs** | Volume **0,19 m³/7 cu ft**

Measurements



Collection: Meet THE OTHERS, an anthropomorphic lantern collection that ventures into decorative art. Playful, colorful, sculptural and sophisticated, THE OTHERS consists of a variety of hand-woven lanterns that, presented individually or arranged in totem-like stacks, take on the appearance of illuminated characters. Pairs of hand-made acrylic eyes, available as accessories, gaze back at the viewer with humor, curiosity and even a little mischief.

Statue TEBU: Composed of two woven lantern shades, one in forest and one in terra, this small-sized sculpture features an Italian marble base and an innovative LED outdoor lighting system, rechargeable by solar panels or cable. Custom compositions are available by special order.

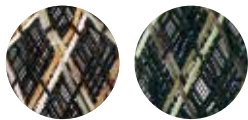
Frame: The frame consist of aluminum. The base consist of marble nero marquina.

Finishing: The frame is electrostatic powder-coated. The marble surface has been treated to prevent moisture absorption.

Options: Optional set of eyes. Handmade acrylic mosaic. Clean with a soft cloth and warm water.

Frame maintenance: Clean with a soft cloth and warm water.

Fiber



129
terra

127
forest

Optional Eyes



093092001

093092002



093092003

Energy efficiency

Energy efficiency eec A+. These luminaires contain built-in LED lamps. The lamps cannot be changed in the luminaires.

Certificates

CE, FCC, PSE, SAA, ETL

IP64

This lighting object is a decorative element for outdoor and indoor use and features a warm white correlated color temperature (2700 Kelvin). It has an ingress protection marking for LED Module by IP64, which means it is dustproof, splash proof and therefore fully suitable for outdoor use.

To learn more about DEDON, our collections and warranty policy, please visit our website –

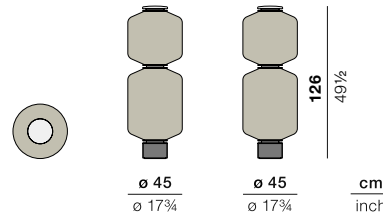
www.dedon.de

THE OTHERS

Statue LIKA

Design by **Stephen Burks** | Item code: **093110000 (230V) / 093115000 (120V)** | Weight **14,1 kg/31 lbs** | Volume **0,26 m³/9 cu ft**

Measurements



Collection: Meet THE OTHERS, an anthropomorphic lantern collection that ventures into decorative art. Playful, colorful, sculptural and sophisticated, THE OTHERS consists of a variety of hand-woven lanterns that, presented individually or arranged in totem-like stacks, take on the appearance of illuminated characters. Pairs of hand-made acrylic eyes, available as accessories, gaze back at the viewer with humor, curiosity and even a little mischief.

Statue LIKA: Composed of two woven lantern shades, one in rock and one in terra, this medium-sized sculpture features an Italian marble base and an innovative LED outdoor lighting system, rechargeable by solar panels or cable. Custom compositions are available by special order.

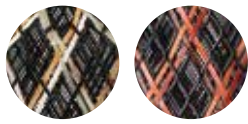
Frame: The frame consist of aluminum. The base consist of marble nero marquina.

Finishing: The frame is electrostatic powder-coated. The marble surface has been treated to prevent moisture absorption.

Options: Optional set of eyes. Handmade acrylic mosaic. Clean with a soft cloth and warm water.

Frame maintenance: Clean with a soft cloth and warm water.

Fiber



129
terra

130
rock

Optional Eyes



093092001

093092002



093092003

Energy efficiency

Energy efficiency eec A+. These luminaires contain built-in LED lamps. The lamps cannot be changed in the luminaires.

Certificates

CE, FCC, PSE, SAA, ETL

IP64

This lighting object is a decorative element for outdoor and indoor use and features a warm white correlated color temperature (2700 Kelvin). It has an ingress protection marking for LED Module by IP64, which means it is dustproof, splash proof and therefore fully suitable for outdoor use.

To learn more about DEDON, our collections and warranty policy, please visit our website –

www.dedon.de

10/20

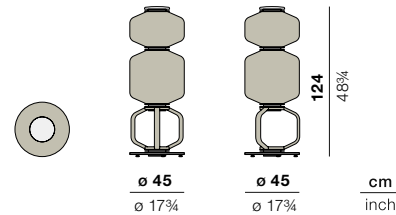
DEDON

THE OTHERS

Statue JAMA

Design by **Stephen Burks** | Item code: **093120000 (230V) / 093125000 (120V)** | Weight **13,2 kg/29 lbs** | Volume **0,26 m³/9 cu ft**

Measurements



Collection: Meet THE OTHERS, an anthropomorphic lantern collection that ventures into decorative art. Playful, colorful, sculptural and sophisticated, THE OTHERS consists of a variety of hand-woven lanterns that, presented individually or arranged in totem-like stacks, take on the appearance of illuminated characters. Pairs of hand-made acrylic eyes, available as accessories, gaze back at the viewer with humor, curiosity and even a little mischief.

Statue JAMA: Composed of woven lantern shades in terra and forest, together with a teak spacer, this large-sized sculpture features an aluminum base and an innovative LED outdoor lighting system, rechargeable by solar panels or cable. Custom compositions are available by special order.

Frame: The frame consist of aluminum. The spacer consists of premium teak.

Finishing: The frame is electrostatic powder-coated. The spacer consists of natural finished teak.

Options: Optional set of eyes. Handmade acrylic mosaic. Clean with a soft cloth and warm water.

Frame maintenance: Clean with a soft cloth and warm water.

Fiber



129
terra

127
forest

Optional Eyes



093092001

093092002



093092003

Energy efficiency

Energy efficiency eec A+. These luminaires contain built-in LED lamps. The lamps cannot be changed in the luminaires.

Certificates

CE, FCC, PSE, SAA, ETL

IP64

This lighting object is a decorative element for outdoor and indoor use and features a warm white correlated color temperature (2700 Kelvin). It has an ingress protection marking for LED Module by IP64, which means it is dustproof, splash proof and therefore fully suitable for outdoor use.

To learn more about DEDON, our collections and warranty policy, please visit our website –

www.dedon.de

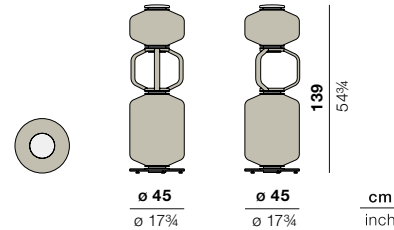
THE OTHERS

Statue KAFA

Design by **Stephen Burks** | Item code: **093150000 (230V) / 093155000 (120V)** | Weight **13,5 kg/30 lbs** | Volume **0,29 m³/10 cu ft**



Measurements



Collection: Meet THE OTHERS, an anthropomorphic lantern collection that ventures into decorative art. Playful, colorful, sculptural and sophisticated, THE OTHERS consists of a variety of hand-woven lanterns that, presented individually or arranged in totem-like stacks, take on the appearance of illuminated characters. Pairs of hand-made acrylic eyes, available as accessories, gaze back at the viewer with humor, curiosity and even a little mischief.

Statue KAFA: Composed of woven lantern shades in forest and rock, with a teak spacer in between, this large-sized sculpture features an aluminum base and an innovative LED outdoor lighting system, rechargeable by solar panels or cable. Custom compositions are available by special order.

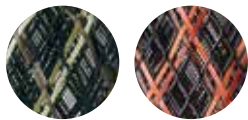
Frame: The frame consist of aluminum. The spacer consists of premium teak.

Finishing: The frame is electrostatic powder-coated. The spacer consists of natural finished teak.

Options: Optional set of eyes. Handmade acrylic mosaic. Clean with a soft cloth and warm water.

Frame maintenance: Clean with a soft cloth and warm water.

Fiber



127
forest

130
rock

Optional Eyes



093092001

093092002



093092003

Energy efficiency

Energy efficiency eec A+. These luminaires contain built-in LED lamps. The lamps cannot be changed in the luminaires.

Certificates

CE, FCC, PSE, SAA, ETL

IP64

This lighting object is a decorative element for outdoor and indoor use and features a warm white correlated color temperature (2700 Kelvin). It has an ingress protection marking for LED Module by IP64, which means it is dustproof, splash proof and therefore fully suitable for outdoor use.

To learn more about DEDON, our collections and warranty policy, please visit our website –

www.dedon.de

10/20

DEDON

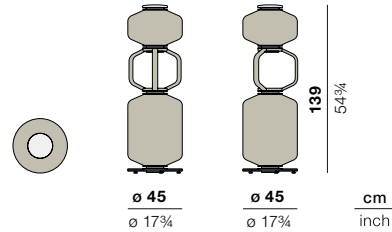
THE OTHERS

Statue TOBO

Design by **Stephen Burks** | Item code: **093140000 (230V) / 093145000 (120V)** | Weight **13,9 kg/31 lbs** | Volume **0,29 m³/10 cu ft**



Measurements



Collection: Meet THE OTHERS, an anthropomorphic lantern collection that ventures into decorative art. Playful, colorful, sculptural and sophisticated, THE OTHERS consists of a variety of hand-woven lanterns that, presented individually or arranged in totem-like stacks, take on the appearance of illuminated characters. Pairs of hand-made acrylic eyes, available as accessories, gaze back at the viewer with humor, curiosity and even a little mischief.

Statue TOBO: Composed of two woven lantern shades in cloud, with a teak spacer in between, this large but lightweight sculpture features an aluminum base and an innovative LED outdoor lighting system, rechargeable by solar panels or cable. Custom compositions are available by special order.

Frame: The frame consist of aluminum. The spacer consists of premium teak.

Finishing: The frame is electrostatic powder-coated. The spacer consists of natural finished teak.

Options: Optional set of eyes. Handmade acrylic mosaic. Clean with a soft cloth and warm water.

Frame maintenance: Clean with a soft cloth and warm water.

Fiber



128
cloud

Optional Eyes



093092001



093092002



093092003

Energy efficiency

Energy efficiency eec A+. These luminaires contain built-in LED lamps. The lamps cannot be changed in the luminaires.

Certificates

CE, FCC, PSE, SAA, ETL

IP64

This lighting object is a decorative element for outdoor and indoor use and features a warm white correlated color temperature (2700 Kelvin). It has an ingress protection marking for LED Module by IP64, which means it is dustproof, splash proof and therefore fully suitable for outdoor use.

To learn more about DEDON, our collections and warranty policy, please visit our website –

www.dedon.de

10/20






DEDON

THE OTHERS

Design by Stephen Burks

DEDON ILLUMINATES THE OUTDOORS

DEDON brings lighting outdoors with three new lighting accessory rechargeable LED system. With warm white color temperature, an eight-step dimmer and handy remote controls, all three collections offer perfect, long-lasting ambient lighting hours. And whether it's the sophisticated material mix of Sebastian Herkner's LOON, the alluring figurative character of Stephen Burks' THE OTHERS (which come with solar panels) or the asymmetric sculptural quality of Harry-Paul's BABYLON, each collection reflects DEDON's passion for bringing people together outdoors.

		THE OTHERS Lantern & hanging lantern	THE OTHERS TEBU, LIKA, JAMA, KAFA, BUKA, TOBO	LOON BABYLON
Lighting Technology		LED module incl. solar panel	LED module incl. solar panel	LED module
Battery run-time at maximum brightness after 9 hours of solar charging		up to 8 hours (Run-time is longer when lights are dimmed)	up to 4 hours (Run-time is longer when lights are dimmed)	–
Battery run-time at maximum brightness after 6 hours of charging by power adapter		up to 10 hours (Run-time is longer when lights are dimmed)	up to 6 hours (Run-time is longer when lights are dimmed)	up to 10 hours (Run-time is longer when lights are dimmed)
Remote control		yes	yes	yes
Dimmer		8 steps	8 steps	8 steps
Correlated color temperature		2700 Kelvin (warm white)	2700 Kelvin (warm white)	2700 Kelvin (warm white)
Ingress Protection Marking LED Module		IP64 (dustproof and splashproof)	IP64 (dustproof and splashproof)	IP64 (dustproof and splashproof)
Energy efficiency These luminaires contain built-in LED lamps. The lamps cannot be changed in the luminaires.		eec A+	eec A+	eec A+

To learn more about DEDON, our collections and warranty policy, please visit our website –

www.dedon.de